

# KP2SC Compactor



Self-Contained Compactor with 2 cubic yards loading chamber



Shown with optional single door dog house



Shown with optional integral 2-yard dumper end mount

Shown with optional dual door dog house with safety interlocks



K-PAC self-contained KP2SC compactors provide features only available from K-PAC.

- Clear chamber opening of 41" x 68" is industry largest to prevent "bridging."
- Full 14" ram penetration out performs competitive models.
- 46.5" feed height eases ground level loading.
- Guided and supported ram with easily replaceable guide shoes increases structural life and reduces maintenance costs.
- "NoShok" system eliminates limit switches (80% of service calls) and improves hydraulic life.
- .38" High Strength floor is 52% thicker and 300% stronger than competitive guided ram compactors.
- Wider ground rollers improve pavement life over competition.
- Adjustable massive cast iron door hinges and strongest structural design insure door rigidity to provide liquid integrity.
- Full door seal of closed cell neoprene (as used in nuclear submarines) provides superior sealing and outlasts competitive seals.
- All units are water tested for liquid integrity before shipment from K-PAC.
- Self-cleaning compactor sump (sub floor) to prevent debris buildup behind ram.



MADE IN THE U.S.A.

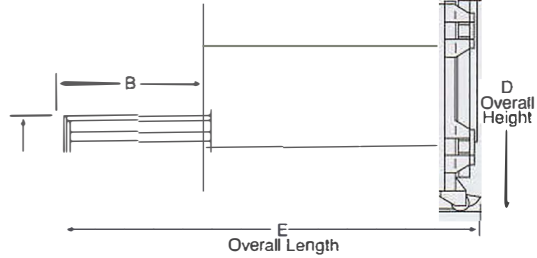
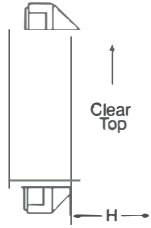
# KP2SC



Shown with the wall chute with access door and no-nozair odor control



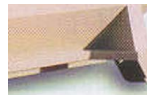
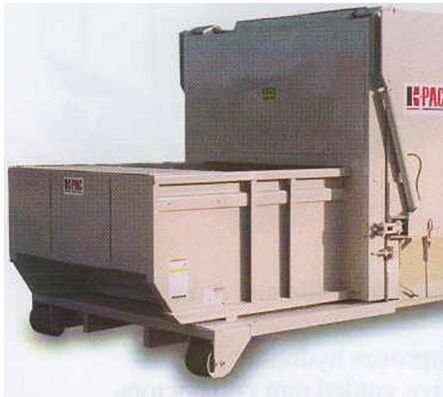
Shown with side mount dumper



## KP2SC Dimensions

Models	KP2SC20	KP25C25	KP2SC30	KP2SC35	KP2SCL20	KP2SCL30
CAPACITY	20 cu. yd.	25 cu. yd.	30 cu. yd.	35 cu. yd.	20 cu. yd.	30 cu. yd.
A (Loading height)	46.5"	46.5"	46.5"	46.5"	46.5"	46.5"
B (Packing head)	71.5"		71.5"	71.5"	71.5"	71.5"
C Container	117.5"	147.5"	177.5"	207.5"	135.5"	207.5"
D (Height)	102.0"	102.0"	102.0"	102.0"	90.0"	90.0"
E Overall length	189.0"	219.0"	249.0"	279.0"	207.0"	279.0"
F (Width)	101.5"	101.5"	101.5"	101.5"	101.5"	101.5"
Weight pounds	9,030	9,710	10,100	10,900	9,030	10,100

## KP2SC Self Contained Specifications



Shown with optional HT and Shed Plate

	<b>KP2SC</b>
Cleartop Opening	41" x 68"
Ram Penetration	14"
Cylinder Size	2 - 4" x 37" Diagonal
Floor	.38 AR Plate
Compactor Sides	.25 Plate
Ram Top	.38 Plate
Ram Face	.25 Plate
Power Pack HP	10 HP
Cycle Time	34 Sec.
Norm. Force	40,250#
Max. Force	45,700#
Norm. PSI	1,850 PSI
Max. PSI	2,100 PSI
Pump Size	12 GPM
Res. Size	20 Gallons
Weight/Complete	See above Chart
Power Pack	10 HP T.E.F.C./3 Phase 230/460 Volt 60 Hertz



Bay Area Trash Compactor  
 1-800-955-0866  
[info@batc-compacts.com](mailto:info@batc-compacts.com)  
[www.batc-compacts.com](http://www.batc-compacts.com)