



Solutions for Waste & Recycling  
**Harmony**<sup>™</sup>  
 ENTERPRISES, INC.

# HM-60

## Closed Door Manual Tie Baler



Shown With Ambidextrous Hopper



**Harmony's HM-60 Horizontal Baler is the Ideal Solution For:**

- Distribution Centers
- Manufacturing Plants
- Recycling Centers
- Scrap Yards

### Industry-Leading Warranty

Harmony provides an industry leading warranty of 1 year labor, 2 year parts, and 3 year structure and cylinder!

**See The Video At:**

<https://youtu.be/qIUZXTRATrc>



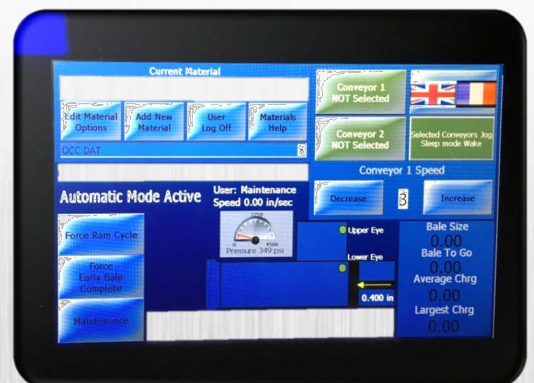
[www.harmony1.com](http://www.harmony1.com)

**Compare these features of the HM-60 with the competition:**

- 7" HD Color Touch Screen
- 187,468 pounds of ram force - 30-50K more than competition!
- 54" x 40" Feed Opening - largest in its class!
- 400 Brinell Wear Liners
- 27-point chassis shear blade
- Automatic material retaining dogs
- High efficiency hydraulics
- Interlocking Chassis
- Over-sized cylinder mounts
- Full Eject feature that clears the chamber after each bale is made, allowing you to switch to another material without shutting down operations or contaminating your bale.
- Hydraulic System Includes Low Oil & Hot Oil Shutdown

**Harmony's HM-60 Horizontal Baler**

- Is built to withstand the harshest environments.
- Improves your business appearance and workplace safety.
- Increases profitability and efficiency.
- Has an optional feed conveyor available.



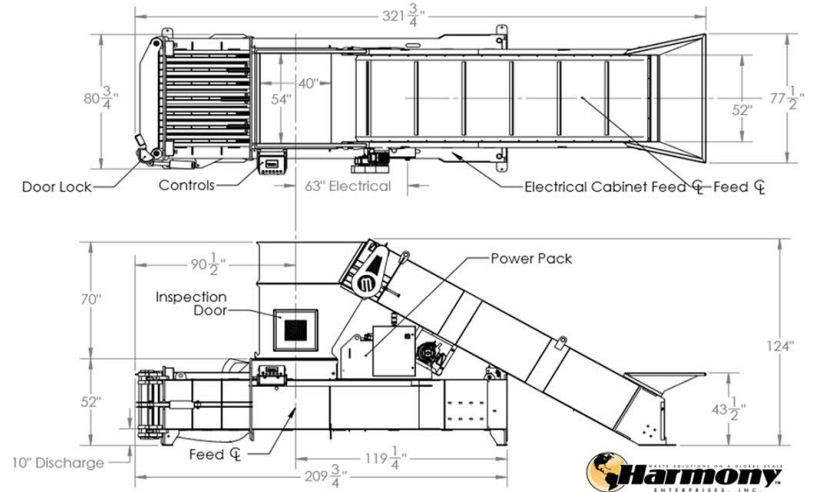
Color Touch Screen Display

**Solutions for Waste Handling and Recycling**



HM-60 Horizontal Baler

Harmony HM-60 Closed Door Manual Tie Baler



**Standard HM60 Features**

- Control Panel Is UL® Listed
- Automatic Bale Decompression
- Remote Mounted Controls
- Hydraulic Door Latch
- HMI Allows User To Select Commodity Being Baled
- Meets Or Exceeds ANSI and OHSA Safety Standards
- Hydraulic System Includes Low Oil & Hot Oil Shutdown

**Bale Weights Produced By HM60:**

- OCC: 1,300 lbs. short stroke  
1,500 lbs. long stroke
- Magazines: 2,000 lbs.
- Newspaper: 1,500 lbs.
- Office Paper: 1,600 lbs.
- Aluminum Cans: 700 lbs.
- Tin Cans: 1,250 lbs.
- HDPE: 1,200 lbs.
- PET: 1,000 lbs.
- Polyurethane Foam: 1,100 lbs.

\*Bale weights are approximate and may differ with moisture content, material density, and caps on PET bottles.

SPECIFICATIONS	HM-60 & HM-60 NF	HM-60 S
Bale Size	30" x 60" x 12-51" (762 x 1524 x 304.8-1270 mm)	30" x 60" x 12-51" (762 x 1524 x 304.8-1270 mm)
Bale Weight	1,300-1,500 lbs. OCC	1,300-1,500 lbs. OCC
Ram Force	172,000 lbs. (78,018 kg)	165,000 lbs. (74,843 kg)
System Pressure	3,800 PSI	3,000 PSI
No Load Cycle Time	28 Seconds	40 Seconds
Electrical Power	208/230/415/460/575 Volt, 3 Phase, 60 Cycle, TEFC	208/230/415/460/575 Volt, 3 Phase, 60 Cycle, TEFC
Motor	20 HP (30 HP Optional)	20 HP (30 HP Optional)
Cylinder	Dual 5.5" bore x 90" stroke	Dual 6" bore x 127" stroke
Pump	48 GPM Piston Pump	48 GPM Piston Pump
Bale Eject	Full Bale Eject	Full Bale Eject
Bale Tying	Manual/Wire	Manual/Wire

DIMENSIONS		
Overall Height	80" (2,032 mm)	80" (2,032 mm)
Overall Length	210" (5,334 mm)	292" (7,417 mm)
Overall Width	83" (2,108 mm)	83" (2,108 mm)
Charge Chamber Opening	54" x 40" (1,372 x 1,016 mm)	54" x 70" (1372 x 1778 mm)
Shipping Height	90" (2286 mm)	90" (2286 mm)
Shipping Weight	17,500 lbs. (7938 kg)	23,000 lbs (10,433 kg)
Installation and Operating Area	83"W x 321"L x 124" H with conveyor (2,108 mm x 8,153 mm x 3,150 mm)	83"W x 404"L x 150" H with conveyor (2,108 mm x 10,262 mm x 3,810 mm)

\*Specifications subject to change without notice.



SAI GLOBAL  
ISO 9001  
Quality



Solutions For Waste Handling And Recycling

**Harmony**  
ENTERPRISES, INC.

**HM-60**

## ADDITIONAL BENEFITS OF HARMONY'S HM60 HORIZONTAL BALER

Harmony's HM60 Closed End Manual Tie Baler has several additional benefits that allow it to stand out as superior to other horizontal balers in its class. All of these added features provide owners with confidence that the baler will continue to work safely, properly, and with minimal operator interference or recycling down time.

**Here are 8 additional benefits of the HM60 that demonstrate its superiority:**

**Interlocking Chassis Construction** - This ensures that any stress produced by the baler is not placed on welds, but on the entire steel structure.

**1/2" Steel Sidewalls** - This is much more robust than that of the competition.

**HMI Interface Programming** - Allows the operator to preset and adjust machine pressure, size of bale, length of bale, weight of bale, commodity being baled, and the calibration of the conveyor upper and lower photo eyes. The ability to preset these settings eliminates the need to have a "cheat sheet" of instructions on the baler and reduces the chance of operator error.

**Wire Placement Settings** - The HMI also remembers the wire placement for different commodities and leads employees through the wire placement and tying process. For example the OCC setting might use 6 wires, while the PET setting might have 2 wires in every position, making 12. This user friendly feature ensures even occasional operators can do the job right every time.

**Auto Shear Jam Correction** - In the event of a shear jam the baler performs an automatic clearing function to clear the jam, seldom requiring operator intervention. If the jam cannot be cleared on its own, the baler will alert the operator with an audio signal and with an on-screen message identifying the problem.

**Auto Hopper Bridge Detection and Clearing** - If there are large boxes or materials lodged in the hopper, the baler will automatically attempt to correct the problem. If the baler is unsuccessful clearing the lodged material, a horn will sound to alert staff so that there is minimal down time.

**Low Oil Shutdown Alarm** - As equipment ages, a simple failure such as a blown hose can cause mortal damage to hydraulic pumps as they are run dry, not to mention damage caused by a full tank of hydraulic oil pumped onto a plant or distribution center floor. This safety feature senses an abnormal oil level drop, alerts the operator, and automatically shuts down the baler quickly before significant oil is lost or pumps are damaged.

**Automatic Bale Decompression** - Opening the door of a horizontal baler while the bale is held under pressure can be deadly. The HM60 ensures this is never done by automatically retracting the ram to fully decompress the bale before allowing the latch/door to be opened. Multiple door and latch sensors prevent the baler/operator from applying pressure while the door or latch are not fully closed and secured. These same safety features restrict ram movement if the door is in an unsafe open position during bale ejection.

***With all of the features and benefits that come with the HM60, its clear to see why this baler is in a class by itself! Call us for a free quote or no-obligation site review today!***