



KP-03

CORRAL COMPACTOR



BENEFITS

- Safety - electrical interlock prevents operator injury when opened
- Quality - meets all ANSI 245.2 standards
- Space - The KP-03 fits in small areas and is perfect for buildings with chute-fed applications

FEATURES

- Single side or turnbuckle latch
- Key switch, start and stop buttons
- Multi-cycle timer
- Oil heater
- Door auto-start
- Remote control
- Lock valve



When space is limited, turn to the K-PAC mini series. This packer is designed to do big jobs in tight spaces.



(925) 465-5133 | info@batc-compacts.com | www.batc-compacts.com

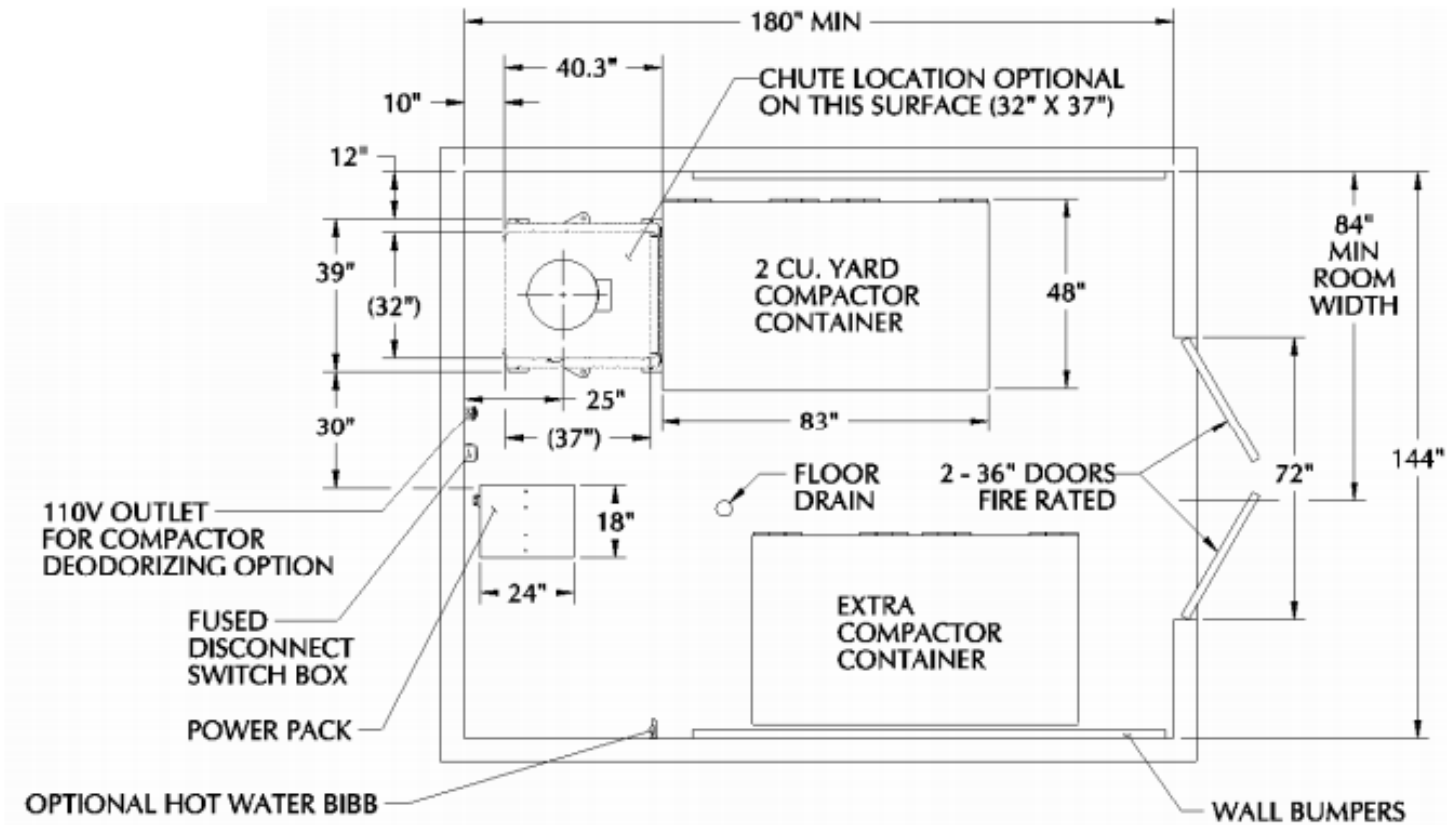
© 2019

manufactured by 




KP-03

CORRAL COMPACTOR



SPECIFICATIONS

| | |
|-----------------------|---|
| Manufacturer's rating | .33 cy |
| WASTEC rating | .24 cy |
| Hydraulic pump | 5 GPM 2-stage (3HP) / 3 GPM 2-stage (1HP) |
| Packing cylinders | 2-diagonal, 2.5" x 20", 1.375" Rod |
| Packing pressure | 15,450 norm / 17,540 max |
| Ram face pressure | 31.3 norm / 35.4 max PSI |
| System pressure | 1,850 norm / 2,100 max PSI |
| RAM penetration | 6" |
| Clear top opening | 22.5" x 28" |
| Loading height | 42" |
| Cycle time | 18 sec (3HP) / 29 sec (1HP) |
| Hydraulic tank | 13 gallons |
| Hydraulic fluid | Dextron III ATF |

*Specifications may vary 

manufactured by 



(925) 465-5133 | info@batc-compacts.com | www.batc-compacts.com

© 2019