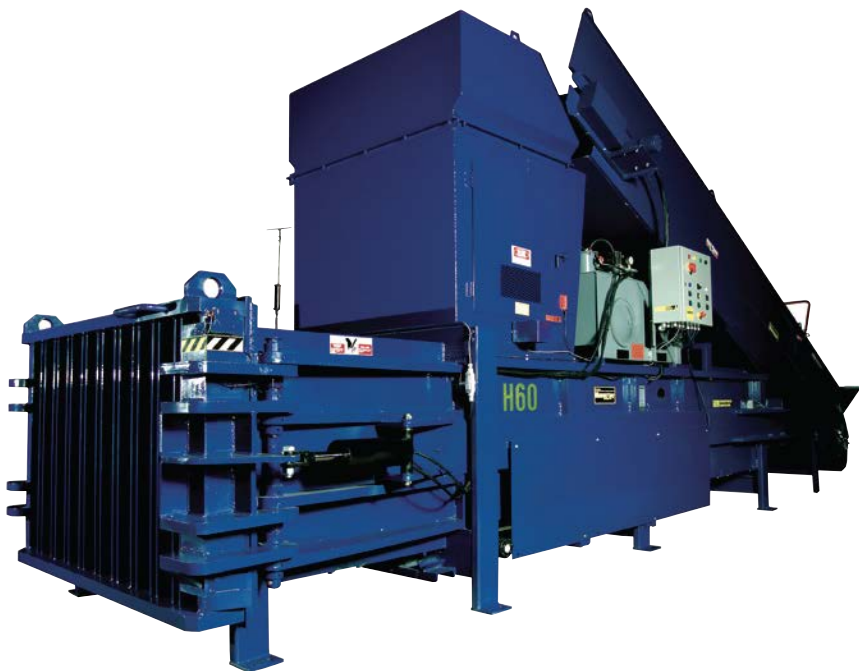


# H60

## Horizontal Baler



The H60 Horizontal Baler is the Ideal Solution For:

- Distribution Centers
- Beverage Facilities
- Manufacturing Facilities
- Recycling Centers
- Scrap Yards

**The H60 is a high-capacity baler with our industry exclusive Semi-Automatic Wire Feeder.**

Compare these features of the H60 with the competition:

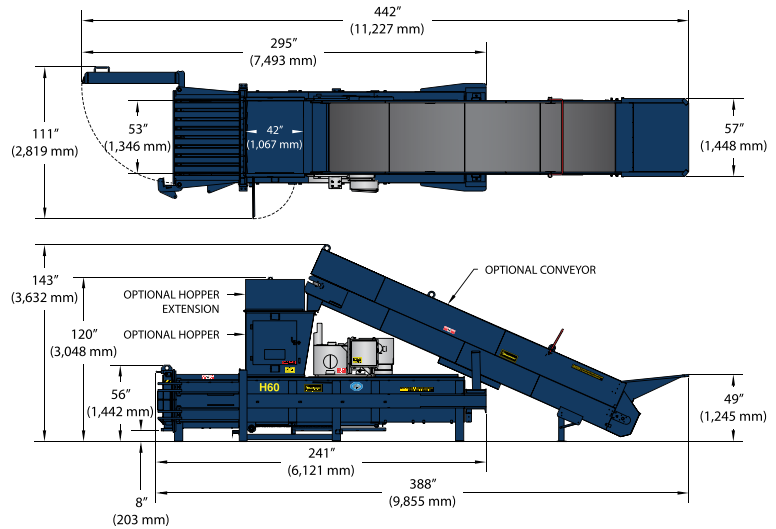
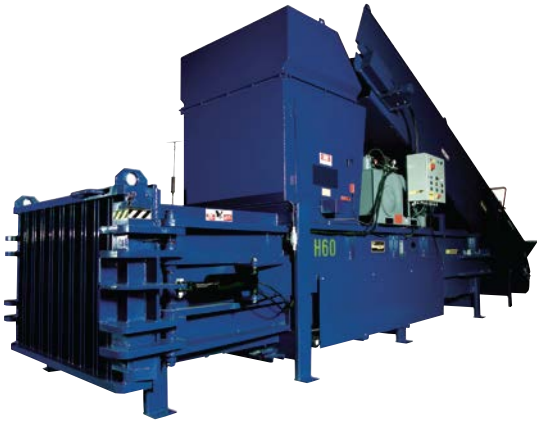
- Cylinder with 5" rod
- Over 150,000 pounds of ram force
- Offers 50% less tying time with no wire guides and patented automatic wire feed technology
- Increases recycling revenue
- Reduces waste disposal costs
- Built to withstand the harshest environments
- Improves your business appearance and increases workplace safety

- Increases profitability and increases labor efficiency
- Optional side feed conveyor available

The H60 Horizontal Baler, another great idea from Harmony Enterprises...*The Undisputed Leader in Quality Manufacturing.*



## H60 Horizontal Baler



### Standard H60 Features:

- Control panel is UL® listed
- Key operated selector switch
- Bale full light
- Oil level sight gauge
- Pressure gauge
- Electrical disconnect non-fused
- Loading door/platen interlock
- Meets or exceeds all ANSI and OSHA safety standards



The H60 features an industry first Automatic Wire Feeder, eliminating the use of wire guides, which is the number one complaint for closed-door horizontal balers. This Harmony Enterprises patented technology cuts tying time by over 50% thus lowering your labor costs.

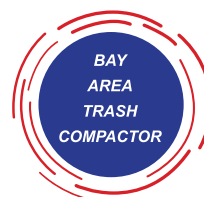
### SPECIFICATIONS

Bale Size	30" x 60" x up to 48" (762 mm x 1,524 mm x up to 1,219 mm)
Bale Weight (corrugated)	1,010 - 1,260 lbs. (458 kg - 572 kg)
Ram Pressure @ 3,000	150,800 lbs. (68,402 kg)
Cycle Time	27 seconds
Cylinder	8" bore (203 mm) 5" rod (127 mm) 96" stroke (2,438 mm)
Motor	20 horsepower, TEFC
Pump	Heavy-duty piston
Electrical Power	208/230/460 volt, 3 phase, 60 hz
Bale Eject	Hydraulic
Bale Tying	Wire

### DIMENSIONS

Overall Height (without hopper)	Varies depending on order options
Overall Length	Varies depending on order options
Overall Width	111" (2,819 mm)
Feed Opening	53" x 42" mm (1,346 mm x 1,067 mm)
Shipping Height	Varies depending on order options
Actual Weight	20,000 lbs. (9,072 kg)
Installation and Operating Area	230 square feet (21.4 square meters)

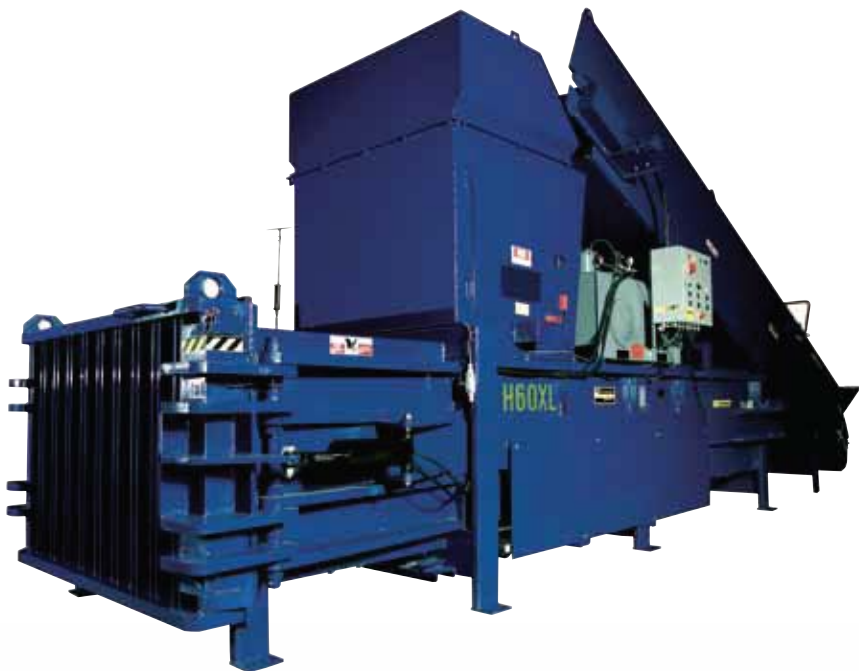
Specifications subject to change without notice.



**Bay Area Trash Compactor**  
**2310 Tice Valley Blvd.**  
**Walnut Creek, CA 94595**  
**1.800.955.0866**  
**www.BATC-Compacts.com**

# H60XL

## Horizontal Baler



The H60XL Horizontal Baler is the Ideal Solution For:

- Distribution Centers
- Beverage Facilities
- Manufacturing Facilities
- Recycling Centers
- Scrap Yards

The H60XL is a high-capacity baler with our industry exclusive Semi-Automatic Wire Feeder.

Compare these features of the H60XL with the competition:

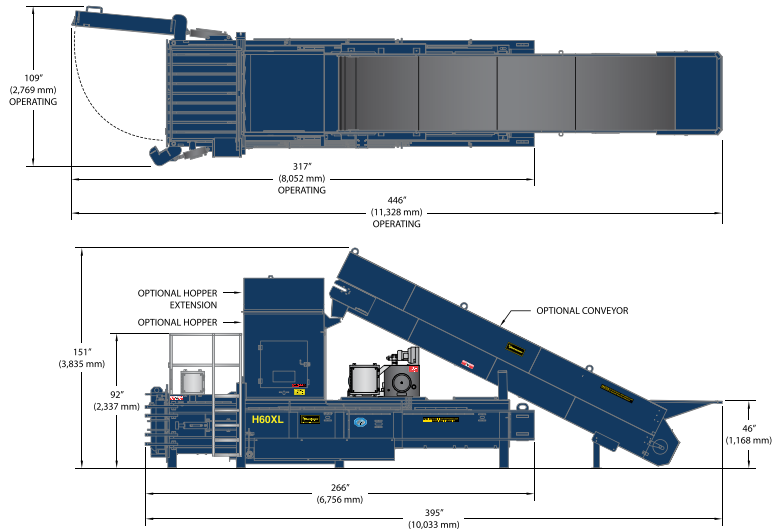
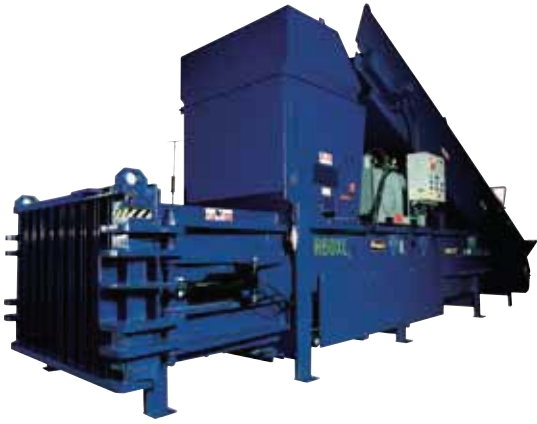
- 8" cylinder with 5" rod
- Over 150,000 pounds of ram force
- Offers 50% less tying time with no wire guides and **patent approved** semi-automatic wire feed technology
- Hydraulic operating unload door for easy open/close and added safety
- Increases recycling revenue
- Reduces waste disposal costs

- Built to withstand the harshest environments
- Improves your business appearance and increases workplace safety
- Increases profitability and increases labor efficiency
- Optional feed conveyor available

The H60XL Horizontal Baler, another great idea from Harmony Enterprises...*The Undisputed Leader in Quality Manufacturing.*



## H60XL Horizontal Baler



### Standard H60XL Features:

- Control panel is UL® listed
- Key operated selector switch
- Bale full light
- Oil level sight gauge
- Electrical disconnect non-fused
- Oil cooler
- Meets or exceeds ANSI and OSHA safety standards



The H60XL Horizontal Baler features an industry first Semi-Automatic Wire Feeder, eliminating the use of wire guides, which is the number one complaint for closed-door horizontal balers. This Harmony Enterprises patented technology cuts tying time by over 50% thus lowering your labor costs.

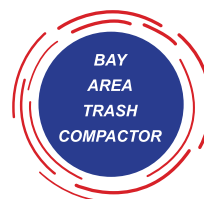
### SPECIFICATIONS

Bale Size	30" x 60" x up to 48" (762 mm x 1,524 mm x up to 1,219 mm)
Bale Weight (cardboard)	1,000 - 1,200 lbs. (454 kg - 544 kg)
Ram Force	150,800 lbs. (68,402 kg)
System Pressure	3,000 psi
Cycle Time	48 seconds
Cylinder	8" bore (203 mm) 5" rod (127 mm) 106" stroke (2,692 mm)
Motor	20 horsepower, TEFC
Pump	Heavy-duty piston
Electrical Power	208/230/460 volt, 3 phase, 60 hz.
Bale Eject	Hydraulic
Bale Tying	Wire

### DIMENSIONS

Overall Height (without hopper)	Varies depending on order options
Overall Length	Varies depending on order options
Overall Width	111" (2,819 mm)
Charge Chamber Opening	53.5" x 52.5" (1,359 mm x 1,334 mm)
Shipping Height	Varies depending on order options
Actual Weight	20,000 lbs. (9,072 kg)
Installation and Operating Area	230 square feet (21.4 square meters)

Specifications subject to change without notice.



**Bay Area Trash Compactor**  
**2310 Tice Valley Blvd.**  
**Walnut Creek, CA 94595**  
**1.800.955.0866**  
**www.BATC-Compacts.com**